



allied

TOOL PRODUCTS
Adjust Your Expectations™



Giving you an extra edge in the marketplace.

Introducing our
ALLIED MULTI-CUT THREADING
AND GROOVING SYSTEM. USA MADE

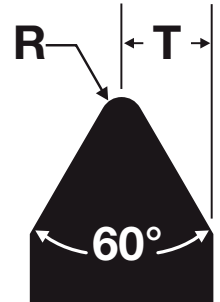
Compatible with OCTICUT™ / GROOVIDEX®

OCTICUT™ is a trademark of Kennametal, Inc.* GROOVIDEX® is a registered trademark of Kennametal Inc.*

Over 50 years experience supplying quality carbide inserts | www.atptools.com

ALLIED MULTI-CUT SYSTEM

Threading Introductory Offering



2 style 6 ID threading edges MULTICUT carbide inserts

Part #	Description	Pitch	T	R
83-140	2NX-AG60	32-8	0.078	0.003
83-141	2NX-G60	14-8	0.078	0.007



#3 style 8 ID/OD threading edges MULTICUT carbide inserts

Part #	Description	Pitch	T	R
83-226	3XX-AG60	32-8	0.078	0.003
83-228	3XX-G60	14-8	0.078	0.007



#4 style 8 ID/OD threading edges MULTICUT carbide inserts

Part #	Description	Pitch	T	R
83-245	4XX-N60	8-5	0.098	0.010

**NOTE: Most types of thread forms will be available soon!
UN's, ISO, Acme & Specials Please call for quote**



Carbide Insert Grades

A9	K30 / C1 - MICRO GRAIN / TiN COATED
X9	K30 / C1 - MICRO GRAIN / TiAlN COATED
F9	K30 / C1 - MICRO GRAIN / TiCN COATED
A5	P30 / C5 - MEDIUM GRAIN / TiN COATED
X2	K10 / C2, C3 - MICRO GRAIN / TiAlN COATED
ZN2	K10 / C2, C3 - MICRO GRAIN / ZrN COATED

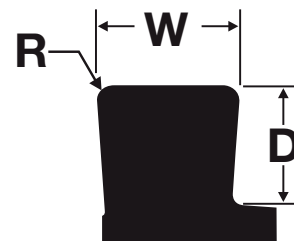
Applications

Alloys Steels, Stainless Steels, High Temp Alloys
Higher Speeds, Oxidation Resistant
Shock Resistant, Austenitic Steels, High Temp Alloys
Steels, Gen Purpose
Cast Iron, Nodular Iron
Aluminum, Magnesium, Copper, Non - Ferrous Materials

Grooving Introductory Offering

2 style 3 ID Grooving edges MULTICUT carbide inserts

Part #	Description	Hand	W	D	R
81-109	2NL-031NG	LH	0.031	0.050	0.005
81-190	2NL-041NG	LH	0.041	0.050	0.005
81-110	2NL-047NG	LH	0.047	0.050	0.005
81-111	2NL-058NG	LH	0.047	0.050	0.005
81-112	2NL-062NG	LH	0.062	0.125	0.008
81-113	2NL-094NG	LH	0.094	0.125	0.008
81-114	2NL-125NG	LH	0.125	0.125	0.008



3 style 4 OD/ID Grooving edges MULTICUT carbide inserts

Part #	Description	Hand	W	D	R
82-131	3XR-031NG	RH	0.031	0.050	0.005
82-122	3XL-031NG	LH	0.031	0.050	0.005
82-138	3XR-062NG	RH	0.062	0.125	0.008
82-194	3XL-062NG	LH	0.062	0.125	0.008
82-141	3XR-094NG	RH	0.094	0.125	0.008
82-128	3XL-094NG	LH	0.094	0.125	0.008
82-143	3XR-125NG	RH	0.125	0.125	0.008
82-130	3XL-125NG	LH	0.125	0.125	0.008



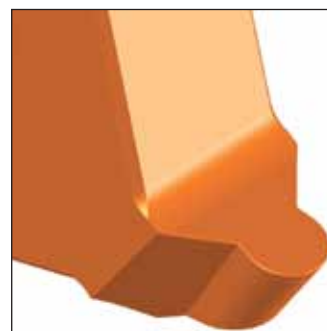
4 style 4 OD/ID Grooving edges MULTICUT carbide inserts

Part #	Description	Hand	W	D	R
84-170	4XR-062NG	RH	0.062	0.125	0.008
84-147	4XL-062NG	LH	0.062	0.125	0.008
84-177	4XR-094NG	RH	0.094	0.180	0.008
84-153	4XL-094NG	LH	0.094	0.180	0.008
84-183	4XR-125NG	RH	0.125	0.180	0.008
84-159	4XL-125NG	LH	0.125	0.180	0.008
84-185	4XR-156NG	RH	0.156	0.180	0.008
84-163	4XL-156NG	LH	0.156	0.180	0.008
84-188	4XR-188NG	RH	0.188	0.190	0.008
84-164	4XL-188NG	LH	0.188	0.190	0.008



NOTE: All in-between groove sizes are available! Full Ball Radius, Face grooving & Specials are available!

Please call for quote 414.355.8280



MULTICUT Holders Introductory Offering

2 style ID Threading & Grooving Bars MULTICUT



Style	RH Part #	Description	Type	LH Part #	Description	Min. Bore
2	68-112	SNRO 0625-6-2	Threading bar	68-118	SNLO 0625-6-2	0.765
2	68-113	SNRO 0750-7-2	Threading bar	68-119	SNLO 0750-7-2	0.875
2	69-124	SNRS 0625-6-2	Grooving bar	69-130	SNLS 0625-6-2	0.765
2	69-125	SNRS 0750-7-2	Grooving bar	69-147	SNLS 0750-7-2	0.875

3 & # 4 style Threading & Grooving holders MULTICUT



Style	Part #	Description	Type	LH Part #	Description
3	70-112	AR3T-0500-4	Threading holder	70-111	AL3T-0500-4
3	70-124	AR3T-0750-5	Threading holder	70-123	AL3T-0750-5
3	70-127	AR3T-1000-5	Threading holder	70-126	AL3T-1000-5
4	71-106	AR4T-1000-5	Threading holder	71-105	AL4T-1000-5
4	71-129	AR4T-1250-5	Threading holder	71-128	AL4T-1250-5
3	70-204	AR3G-0500-4P	Grooving holder	70-203	AL3G-0500-4P
3	70-208	AR3G-0750-5P	Grooving holder	70-207	AL3G-0750-5P
3	70-210	AR3G-1000-5P	Grooving holder	70-209	AL3G-1000-5P
4	71-218	AR4G-1000-5P	Grooving holder	71-217	AL4G-1000-5P
4	71-229	AR4G-1250-5P	Grooving holder	71-228	AL4G-1250-5P

3 & # 4 style Threading & Grooving bars MULTICUT



Style	RH Part #	Description	Type	LH Part #	Description	Min. Bore
3	72-104	SNRO-0750-7-3	Threading bar	72-106	SNLO-0750-7-3	0.875
3	72-105	SNRO-1000-8-3	Threading bar	72-107	SNLO-1000-8-3	1.145
3	72-135	SNRO-1250-8-3	Threading bar	72-133	SNLO-1250-8-3	1.395
4	73-105	SNRO-1000-8-4	Threading bar	73-107	SNLO-1000-8-4	1.25
4	73-135	SNRO-1250-8-4	Threading bar	73-133	SNLO-1250-8-4	1.45
3	72-222	SNRS-0750-7-3	Grooving bar	72-121	SNLS-0750-7-3	0.875
3	72-224	SNRS-1000-8-3	Grooving bar	72-223	SNLS-1000-8-3	1.145
4	73-228	SNRS-1000-8-4	Grooving bar	73-227	SNLS-1000-8-4	1.25
4	73-112	SNRS-1250-8-4	Grooving bar	73-107	SNLS-1250-8-4	1.45

NOTE: Many more holders are available! Specials are available!

Please call for quote 414.355.8280. Outside WI 1.800.558.5147.



Cut Off & Deep Grooving Introductory Offering

Q style 4 edges MULTICUT carbide inserts

Part #	Description	Hand	W	D	Nose
86-442	QXL-031N	LH	0.031	0.110	N
86-446	QXR-031N	RH	0.031	0.110	N
86-450	QXR-031C4A	RH	0.031	0.110	4A
86-454	QXR-031C18A	RH	0.031	0.110	18A
86-444	QXL-062N	LH	0.062	0.265	N
86-448	QXR-062N	RH	0.062	0.265	N
86-452	QXR-062C4A	RH	0.062	0.265	4A
86-456	QXR-062C18A	RH	0.062	0.265	18A
86-458	QXL-094N	LH	0.094	0.265	N
86-461	QXR-094N	RH	0.094	0.265	N
86-464	QXR-094C4A	RH	0.094	0.265	4A
86-467	QXR-094C18A	RH	0.094	0.265	18A
	METRIC		METRIC		
86-421	QXR-1N	RH	1	2.790	N
86-422	QXR-1C4A	RH	1	2.790	4A
86-423	QXR-1C18A	RH	1	2.790	18A
86-447	QXR-1.5N	RH	1.5	6.730	N
86-451	QXR-1.5C4A	RH	1.5	6.730	4A
86-455	QXR-1.5C18A	RH	1.5	6.730	18A
86-449	QXR-2N	RH	2	6.730	N
86-453	QXR-2C4A	RH	2	6.730	4A
86-457	QXR-2C18A	RH	2	6.730	18A

Q style MULTICUT holders

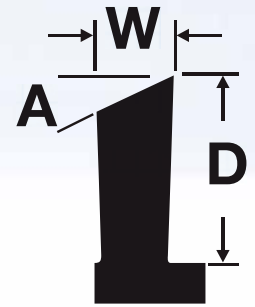
Part #	Description	Type	Style
72-432	AQR-0375	RH	Q
72-433	AQR-0500	RH	Q
72-434	AQR-0625	RH	Q
72-435	AQR-0750	RH	Q
72-444	AQR-10	RH	Q
72-445	AQR-12	RH	Q
72-446	AQR-16	RH	Q



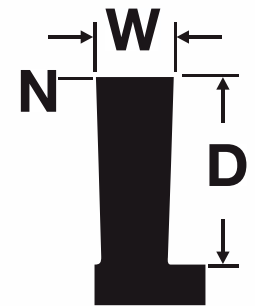
Right Hand



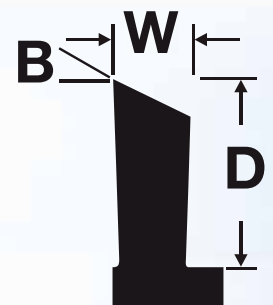
Left Hand



A = 4° or 18° RH Lead Angle



Neutral Nose Angle



B = 4° or 18° LH Lead Angle

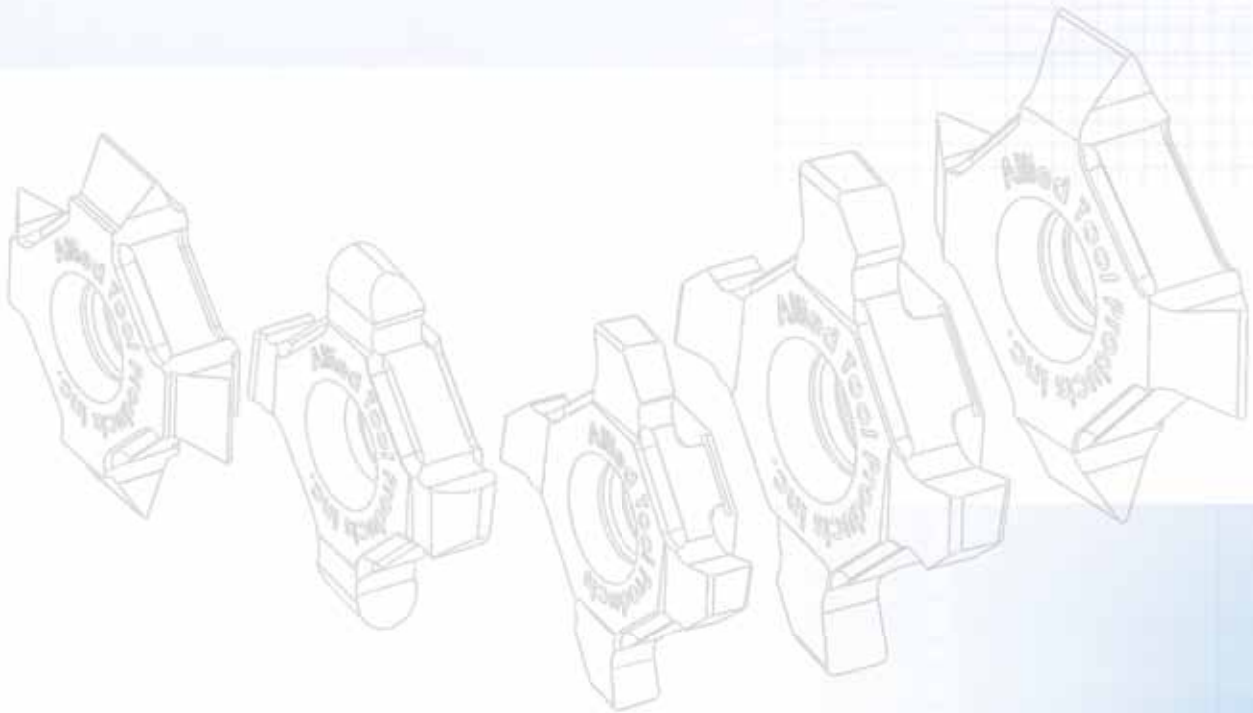


Many more items are available on the Q system

Please call for quote 414.355.8280

Hardware Insert screws for MULTICUT SYSTEM TORX WRENCH

#2 Style	Insert screw A2S	ATW10
#3 Style	Insert screw A3S	ATW15
#4 & Q Style	Insert screw A4S	ATW20



Supplied by:

Allied Tool Products
9334 North 107th Street
Milwaukee, Wisconsin 53224-1121 • USA

Tel: 414.355.8280
Fax: 414.355.8297
Outside WI: 1.800.558.5147

sales@atptools.com
www.atptools.com